

VOLVO CONSTRUCTION EQUIPMENT MATRIS REPORT

Machine model PL4809E	SerialNo 310020	Operating Hours 1252.3	Reading Date 08/04/2019
Company name romco carmine tx	Dealer	Report Issuer	
Contact name	Technician shawn r	Primary Application Piping	
Site	Workorder	Ground Condition	

MATRIS Reading, Summary / Recommendation



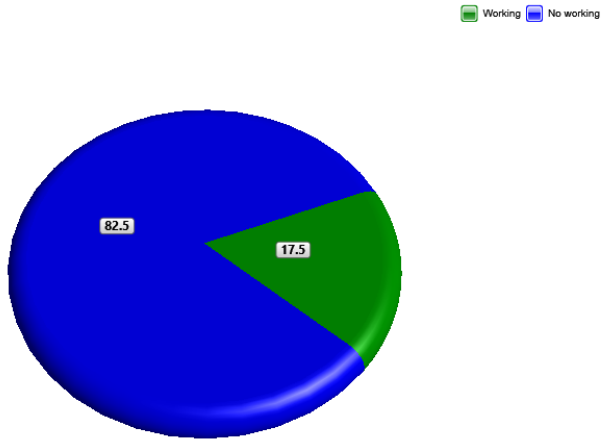
Machine model	SerialNo	Operating Hours	Reading Date
PL4809E	310020	1252.3	08/04/2019

Main equipment	Type	Equipment
	Track chain	



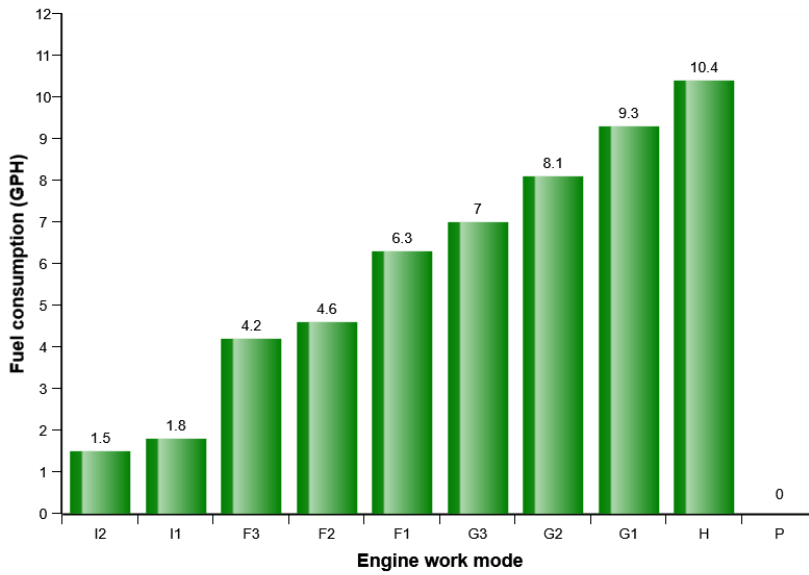
Machine model	SerialNo	Operating Hours	Reading Date
PL4809E	310020	1252.3	08/04/2019

Machine utilization (%)



Total logged time (h) = 1252.4

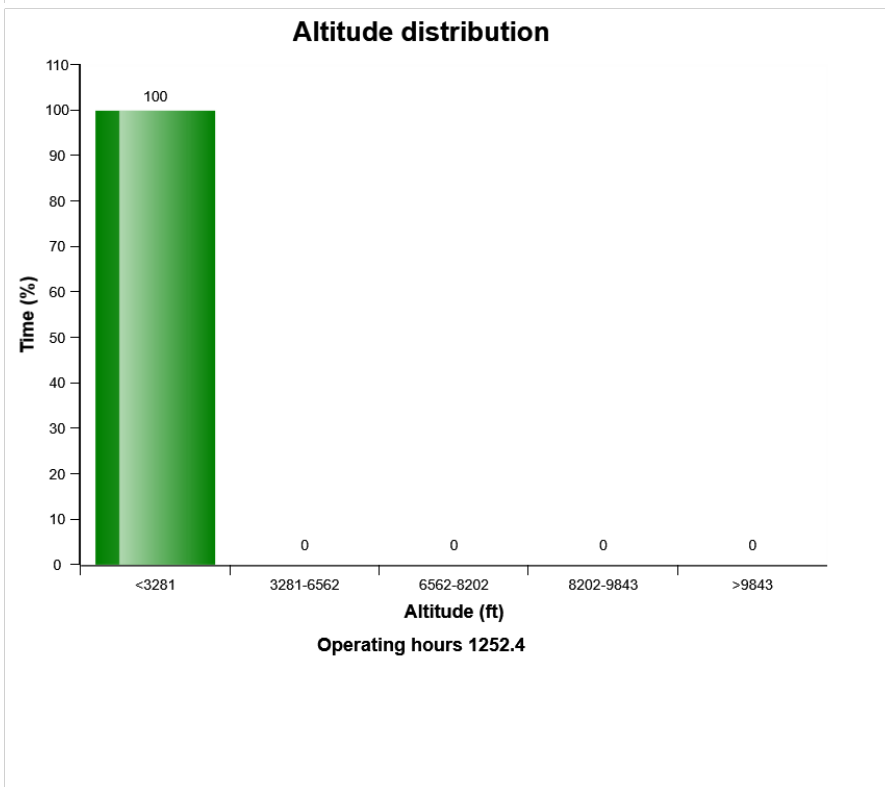
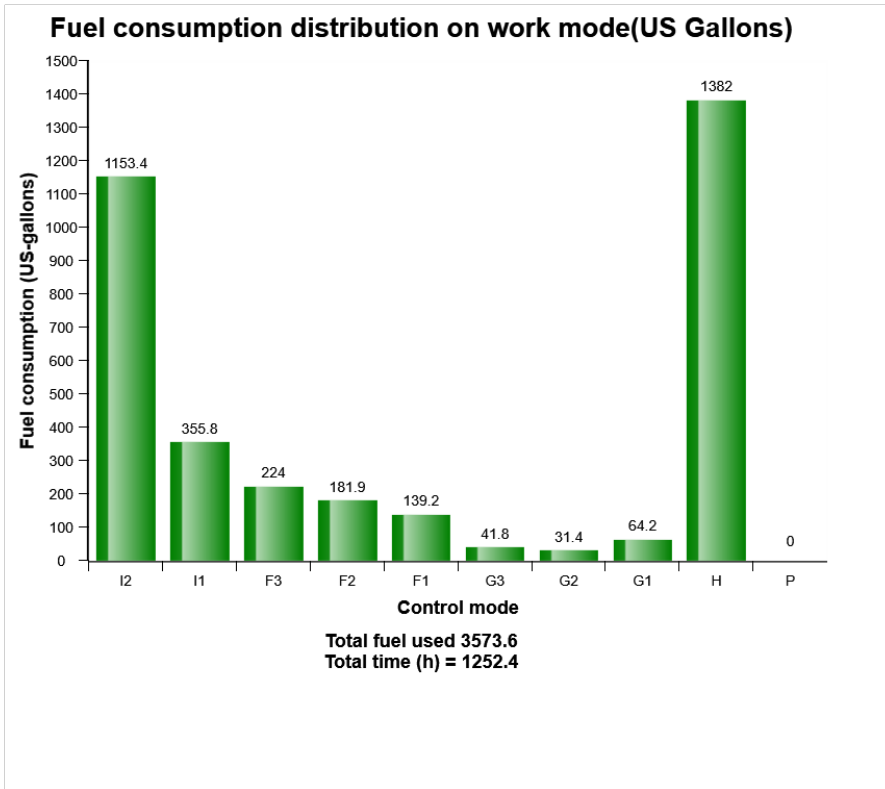
Fuel consumption distribution on work mode



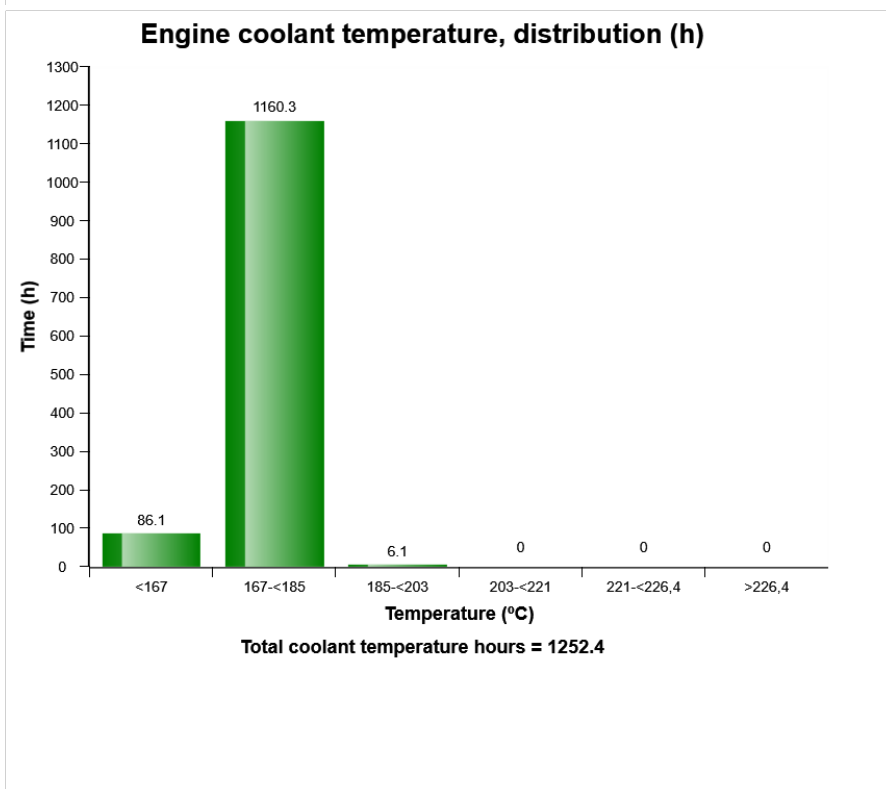
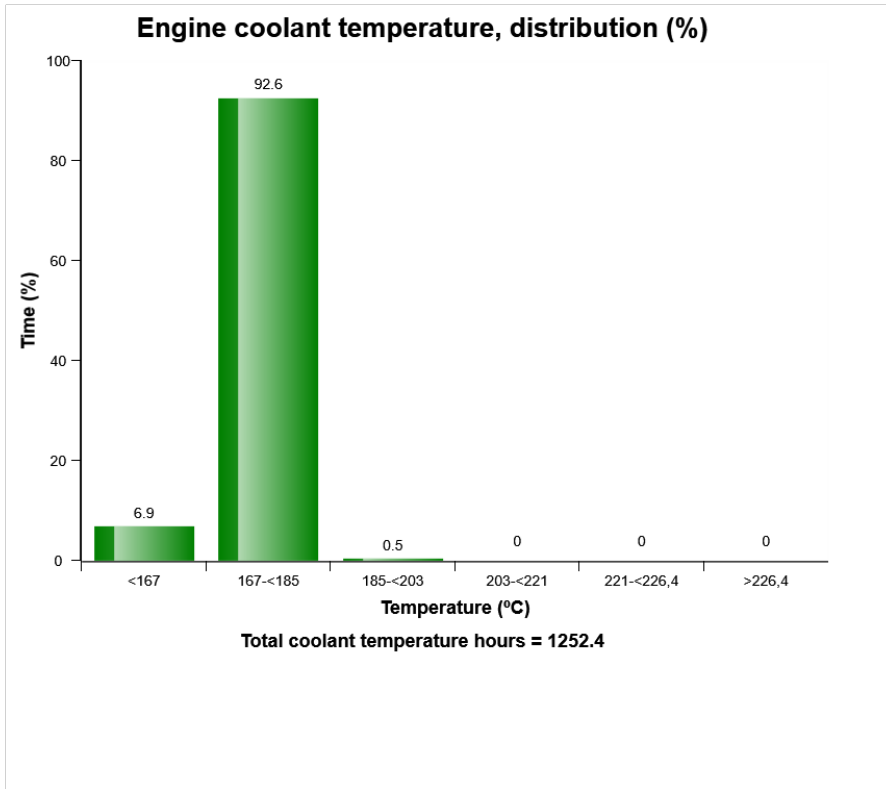
Fuel consumption (GPH) = 2.9
 Fuel used (US-Gallons) = 3573.6



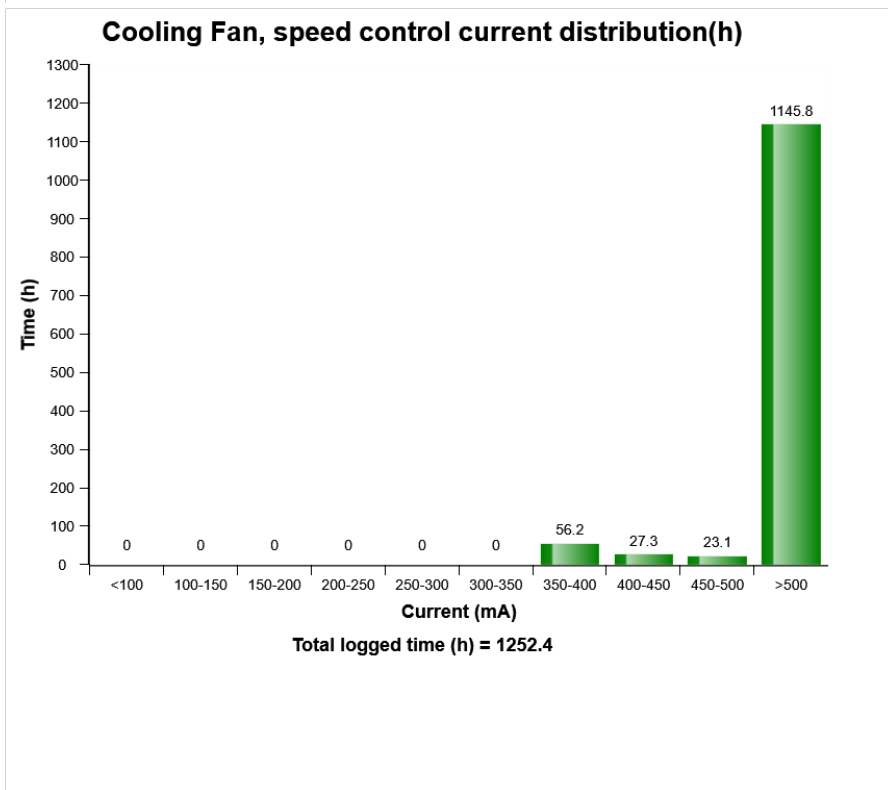
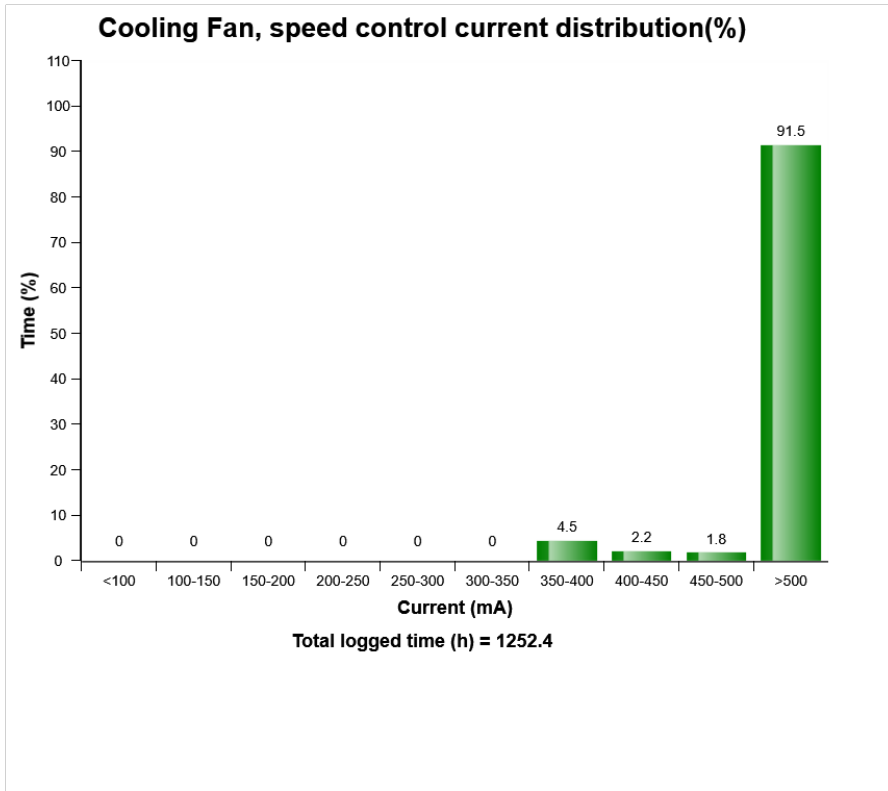
Machine model	SerialNo	Operating Hours	Reading Date
PL4809E	310020	1252.3	08/04/2019



Machine model	SerialNo	Operating Hours	Reading Date
PL4809E	310020	1252.3	08/04/2019

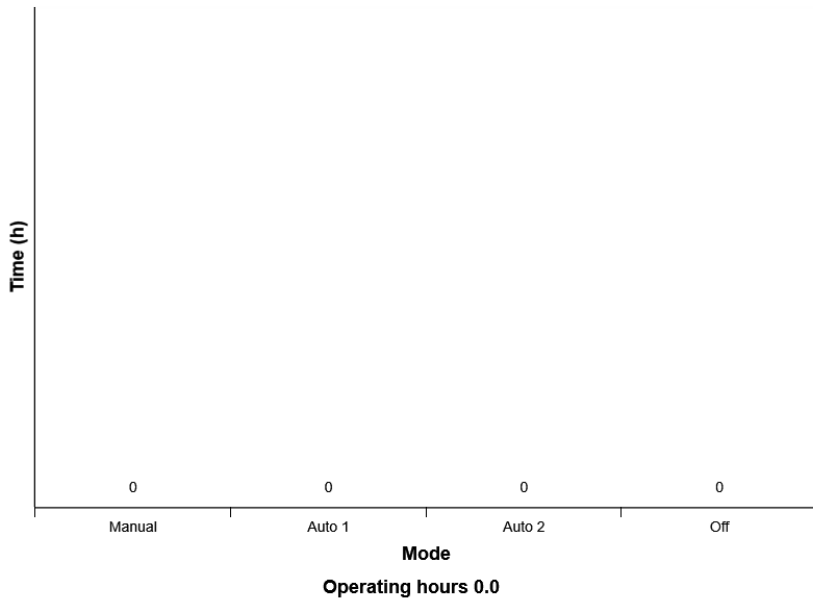


Machine model	SerialNo	Operating Hours	Reading Date
PL4809E	310020	1252.3	08/04/2019

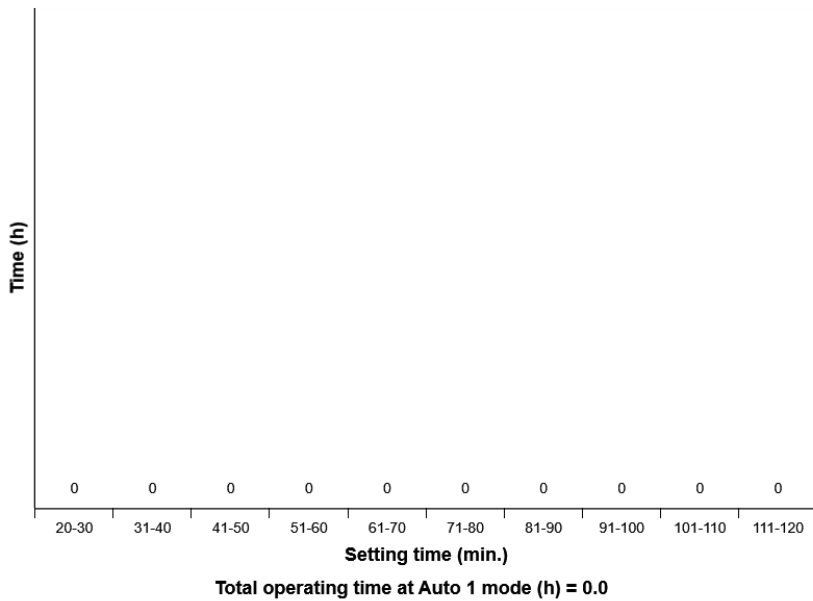


Machine model	SerialNo	Operating Hours	Reading Date
PL4809E	310020	1252.3	08/04/2019

Cooling fan, Mode distribution (h)

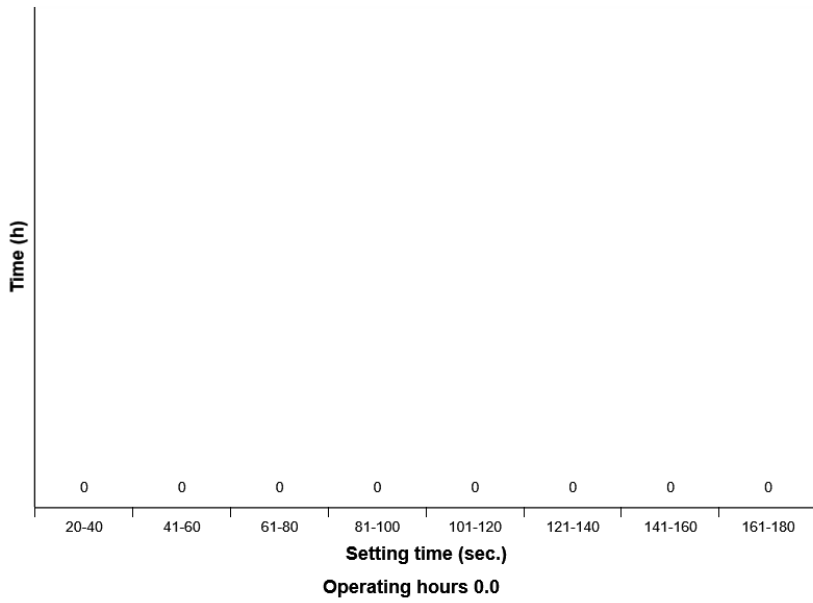


Reverisble fan, Time setting distribution (h) at Auto 1 mode

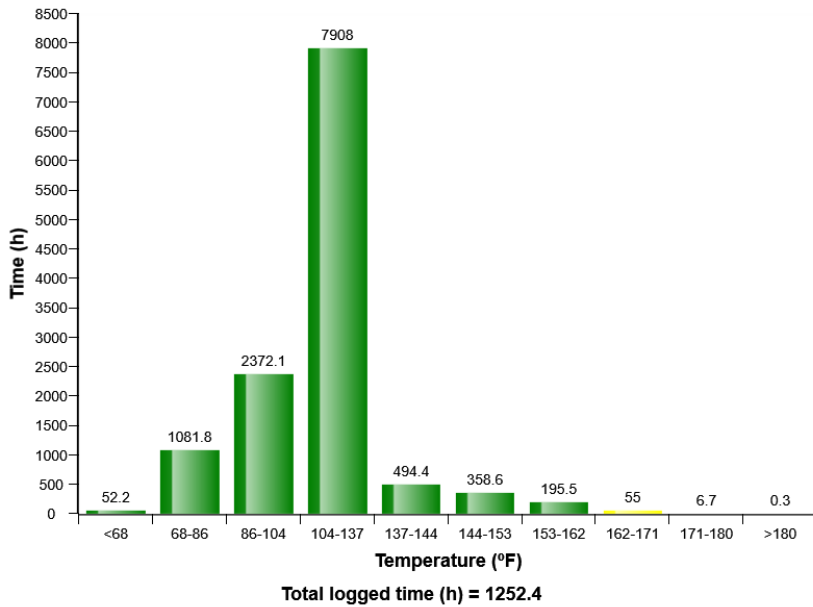


Machine model	SerialNo	Operating Hours	Reading Date
PL4809E	310020	1252.3	08/04/2019

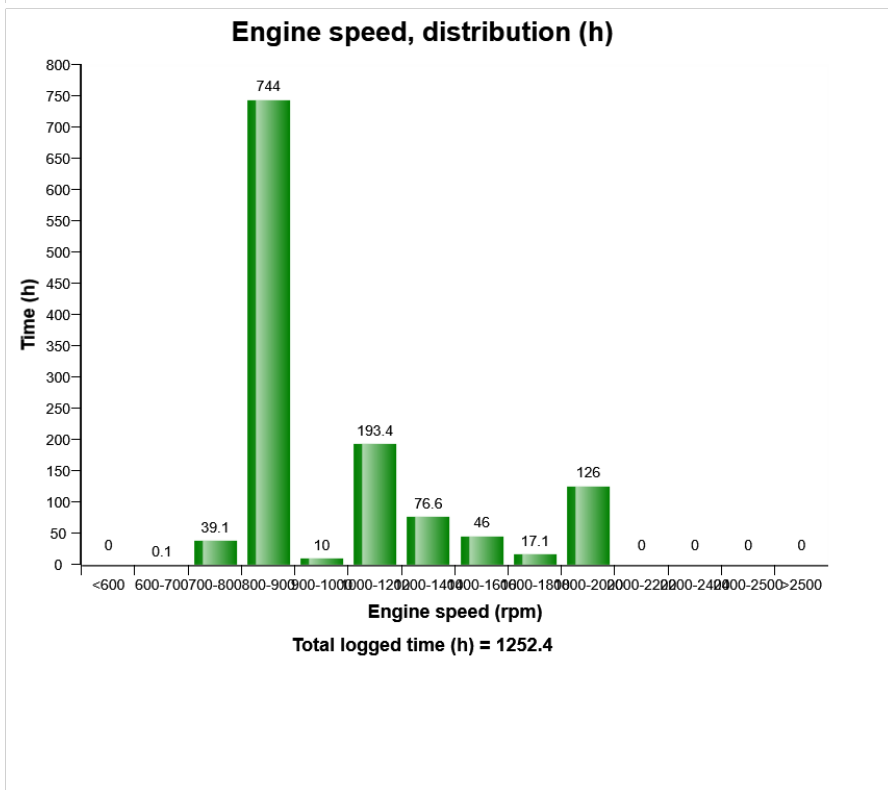
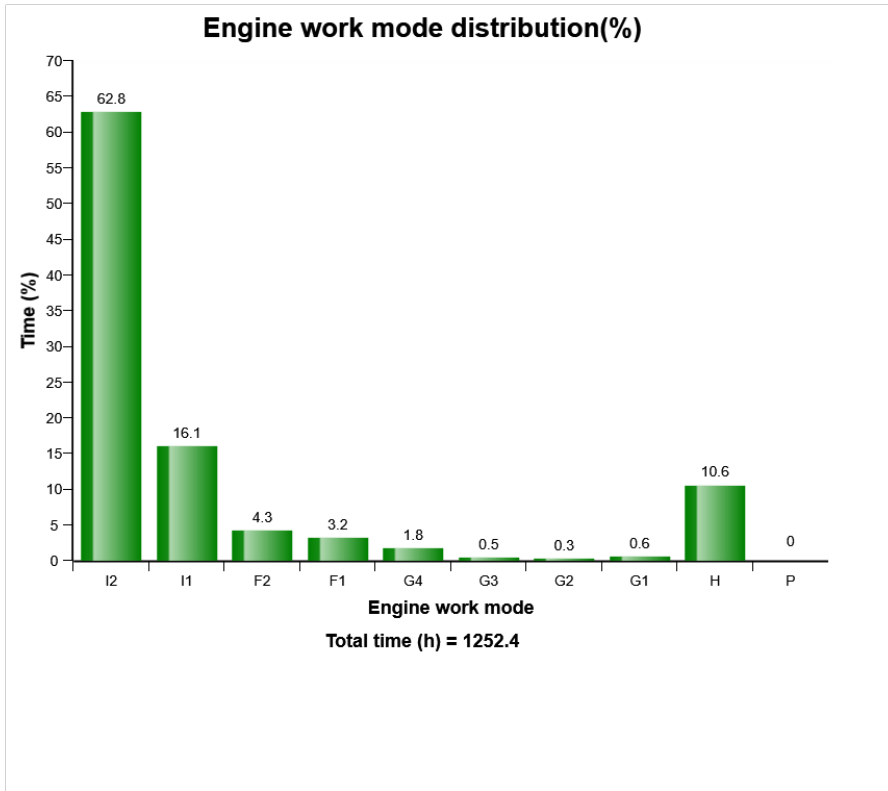
Reversible fan, Time setting distribution (h) at Manual mode



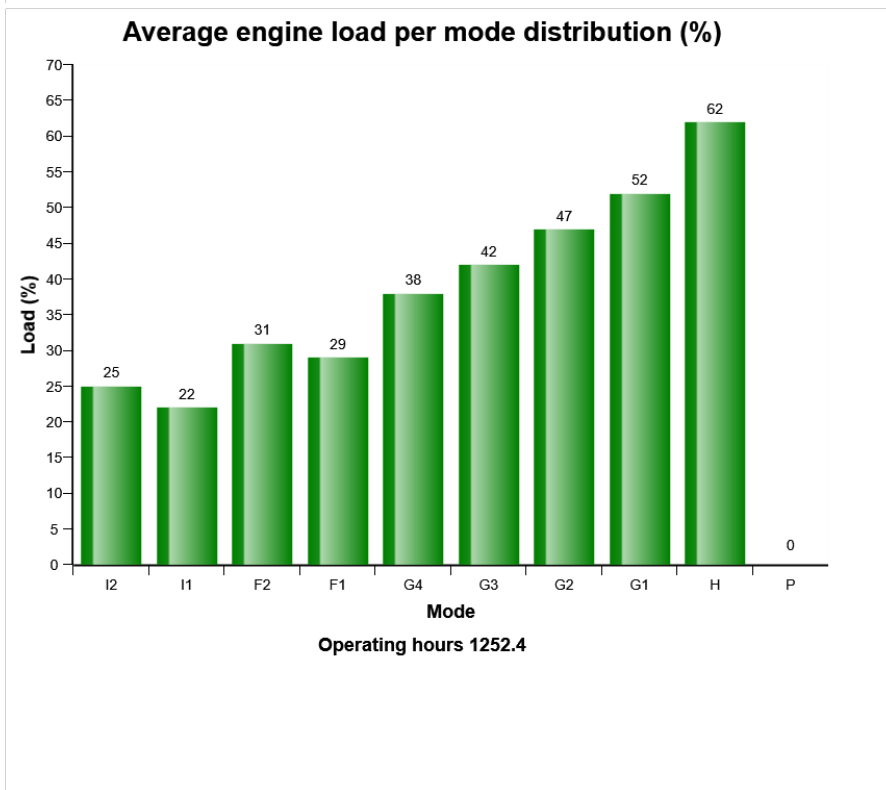
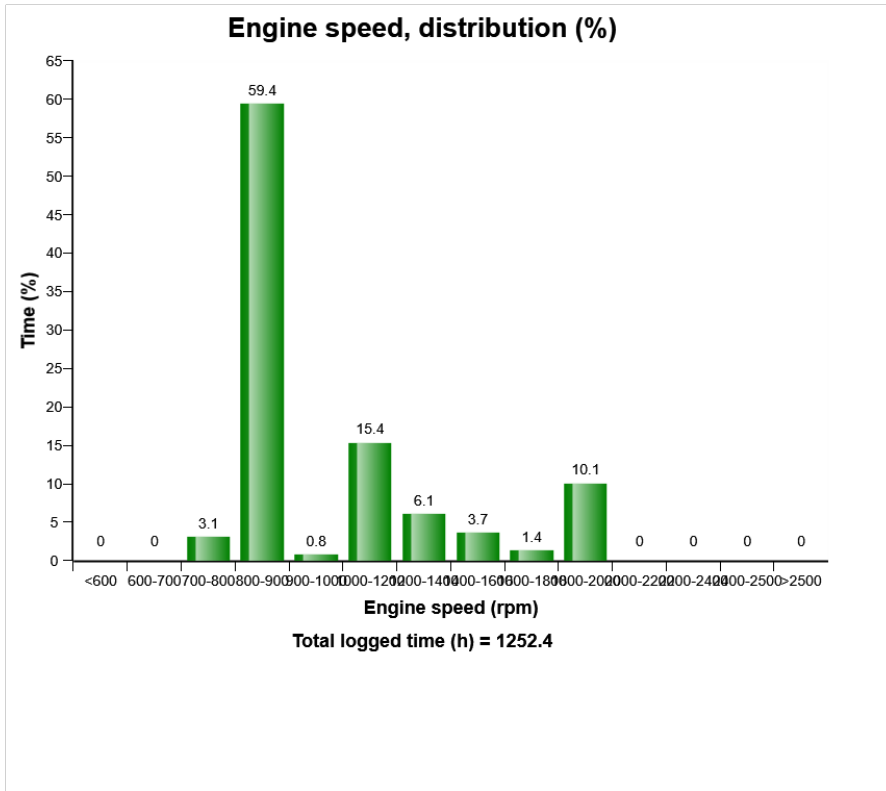
Engine boost air temperature distribution (h)



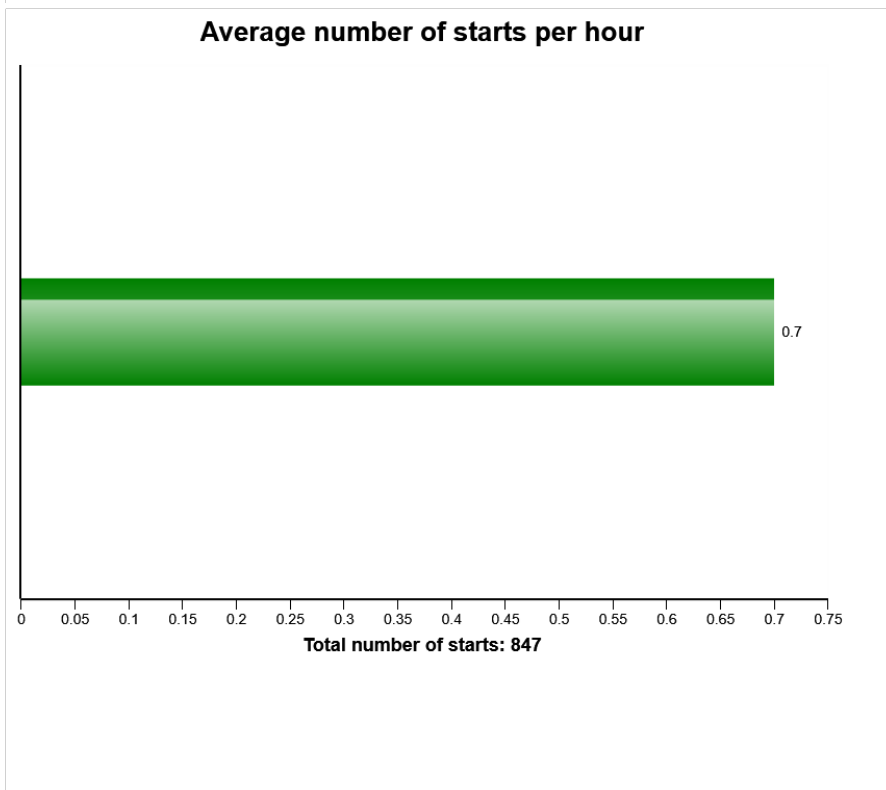
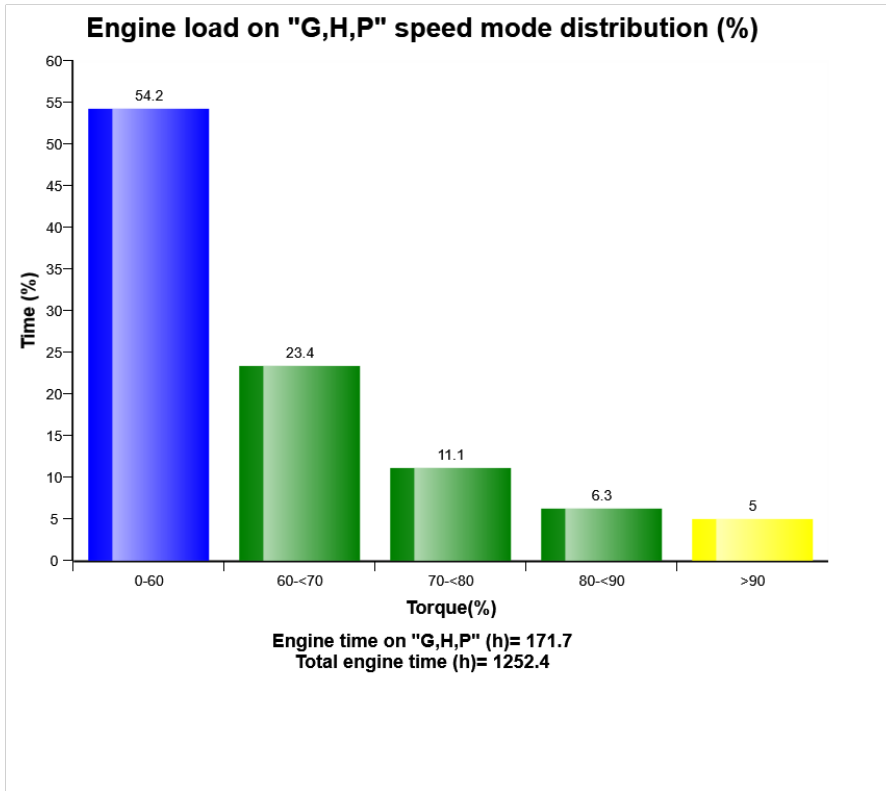
Machine model	SerialNo	Operating Hours	Reading Date
PL4809E	310020	1252.3	08/04/2019



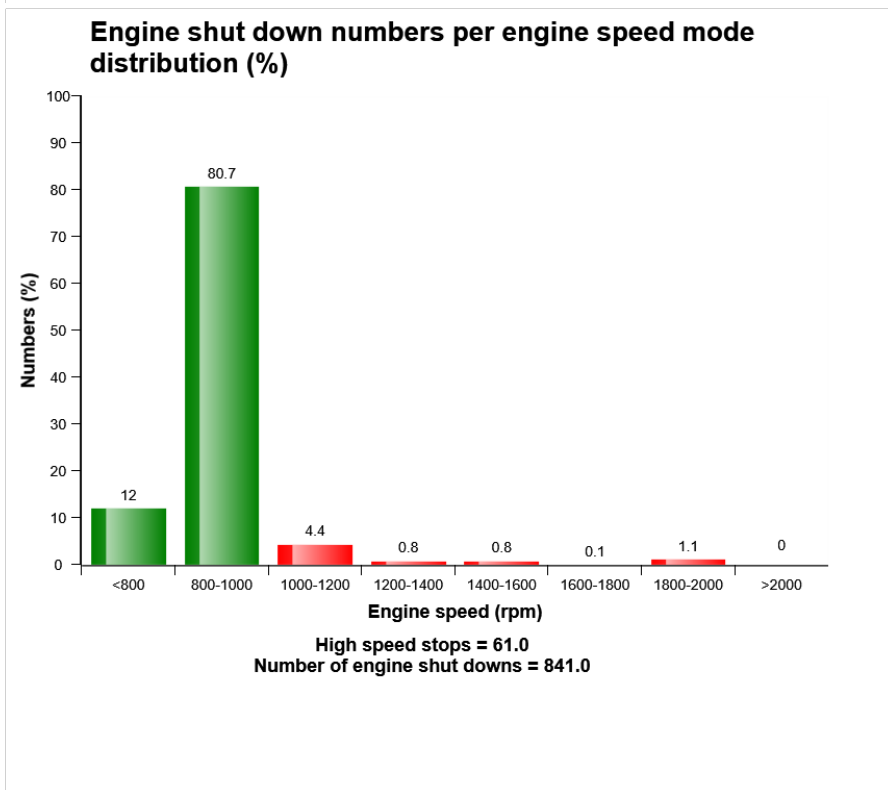
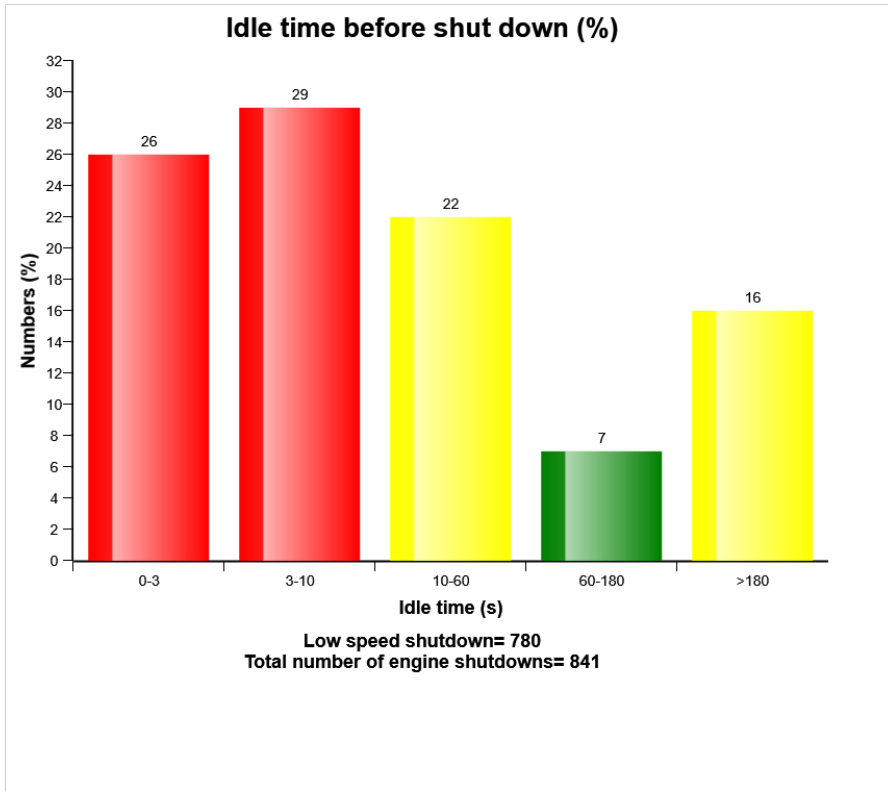
Machine model	SerialNo	Operating Hours	Reading Date
PL4809E	310020	1252.3	08/04/2019



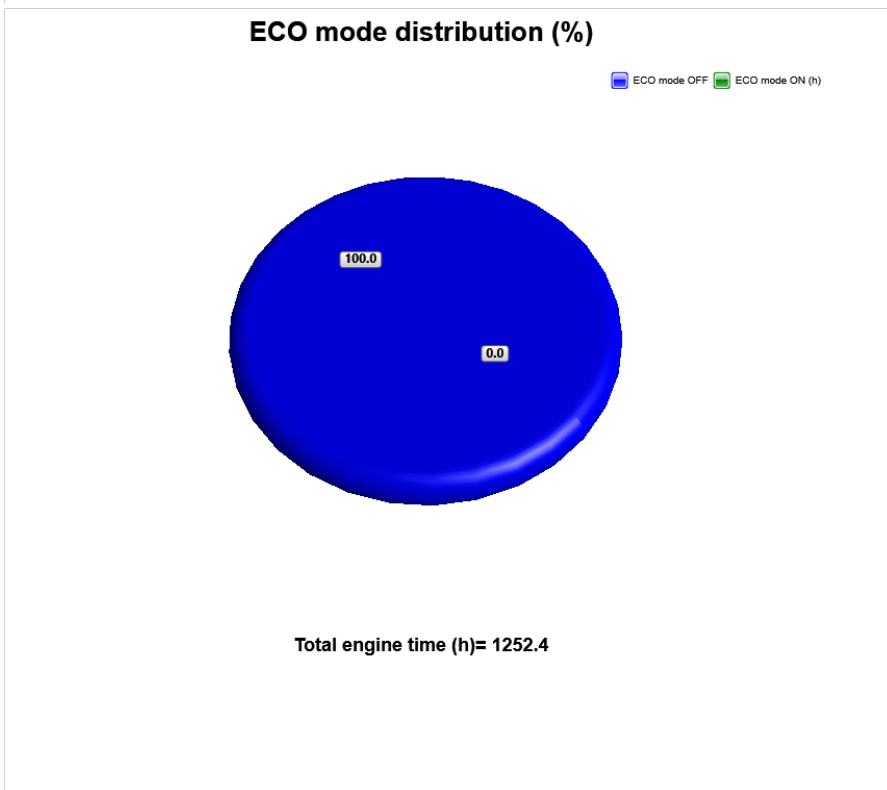
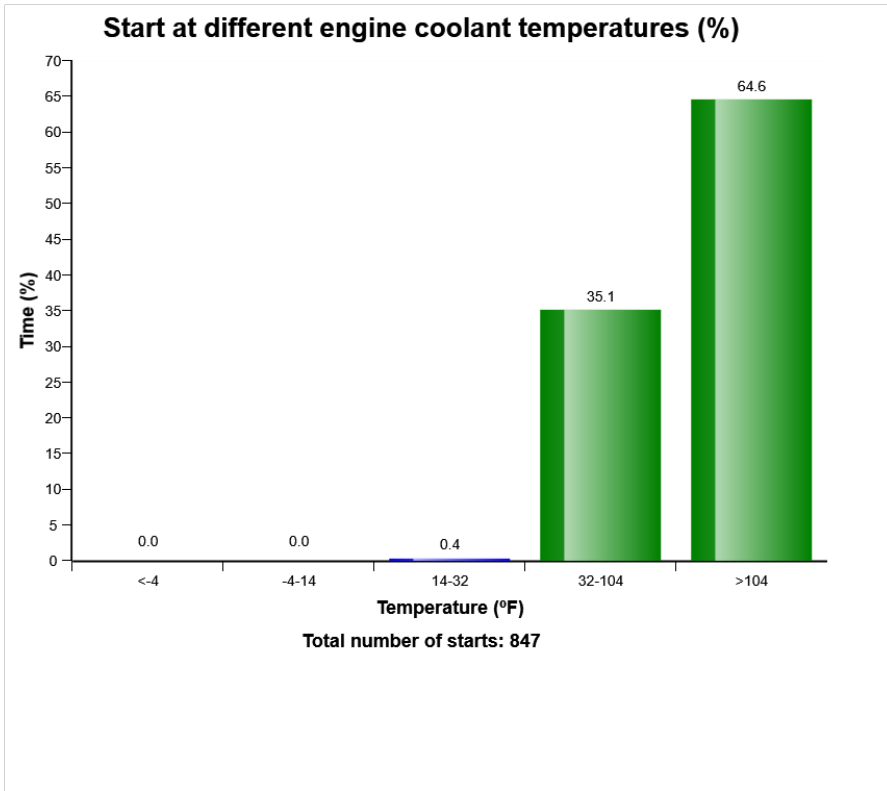
Machine model	SerialNo	Operating Hours	Reading Date
PL4809E	310020	1252.3	08/04/2019



Machine model	SerialNo	Operating Hours	Reading Date
PL4809E	310020	1252.3	08/04/2019



Machine model	SerialNo	Operating Hours	Reading Date
PL4809E	310020	1252.3	08/04/2019



Machine model	SerialNo	Operating Hours	Reading Date
PL4809E	310020	1252.3	08/04/2019

Low Engine Oil Pressure
Total number of occurrences = 0

	Op hours	Year	Month	Day	Hour	Minute	Duration (seconds)	Extreme (psi)
*	0	2000	0	0	0	0	0	0
*	0	2000	0	0	0	0	0	0
*	0	2000	0	0	0	0	0	0
*	0	2000	0	0	0	0	0	0
*	0	2000	0	0	0	0	0	0
*	0	2000	0	0	0	0	0	0
*	0	2000	0	0	0	0	0	0
*	0	2000	0	0	0	0	0	0
*	0	2000	0	0	0	0	0	0
*	0	2000	0	0	0	0	0	0
*	0	2000	0	0	0	0	0	0
*	0	2000	0	0	0	0	0	0
*	0	2000	0	0	0	0	0	0
*	0	2000	0	0	0	0	0	0
*	0	2000	0	0	0	0	0	0
*	0	2000	0	0	0	0	0	0
*	0	2000	0	0	0	0	0	0
*	0	2000	0	0	0	0	0	0
*	0	2000	0	0	0	0	0	0
*	0	2000	0	0	0	0	0	0
*	0	2000	0	0	0	0	0	0
*	0	2000	0	0	0	0	0	0
*	0	2000	0	0	0	0	0	0



Machine model	SerialNo	Operating Hours	Reading Date
PL4809E	310020	1252.3	08/04/2019

Low Air filter pressure
Total number of occurrences = 0

Op hours	Year	Month	Day	Hour	Minute	Duration (seconds)
0	2000	0	0	0	0	0
0	2000	0	0	0	0	0
0	2000	0	0	0	0	0
0	2000	0	0	0	0	0
0	2000	0	0	0	0	0
0	2000	0	0	0	0	0
0	2000	0	0	0	0	0
0	2000	0	0	0	0	0
0	2000	0	0	0	0	0
0	2000	0	0	0	0	0
0	2000	0	0	0	0	0
0	2000	0	0	0	0	0
0	2000	0	0	0	0	0
0	2000	0	0	0	0	0
0	2000	0	0	0	0	0
0	2000	0	0	0	0	0
0	2000	0	0	0	0	0
0	2000	0	0	0	0	0
0	2000	0	0	0	0	0
0	2000	0	0	0	0	0
0	2000	0	0	0	0	0



Machine model	SerialNo	Operating Hours	Reading Date
PL4809E	310020	1252.3	08/04/2019

Regeneration aborted
Total number of occurrences = 0

Op hours	Year	Month	Day	Hour	Minute	Reason
* 0	2000	0	0	0	0	0
* 0	2000	0	0	0	0	0
* 0	2000	0	0	0	0	0
* 0	2000	0	0	0	0	0
* 0	2000	0	0	0	0	0
* 0	2000	0	0	0	0	0
* 0	2000	0	0	0	0	0
* 0	2000	0	0	0	0	0
* 0	2000	0	0	0	0	0
* 0	2000	0	0	0	0	0
* 0	2000	0	0	0	0	0
* 0	2000	0	0	0	0	0
* 0	2000	0	0	0	0	0
* 0	2000	0	0	0	0	0
* 0	2000	0	0	0	0	0
* 0	2000	0	0	0	0	0
* 0	2000	0	0	0	0	0
* 0	2000	0	0	0	0	0
* 0	2000	0	0	0	0	0
* 0	2000	0	0	0	0	0
* 0	2000	0	0	0	0	0



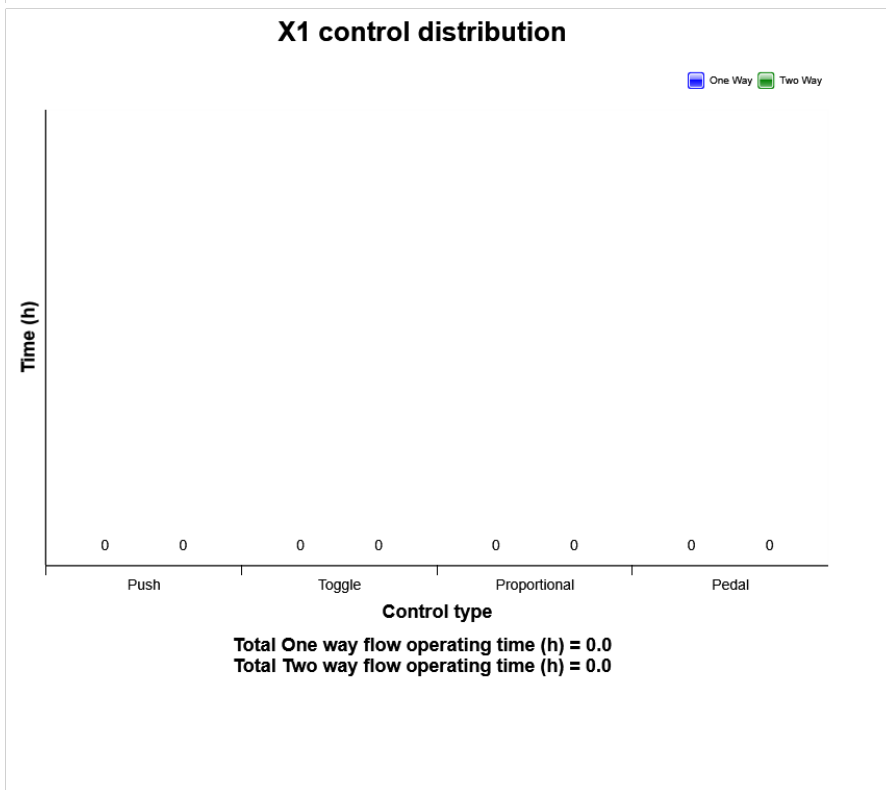
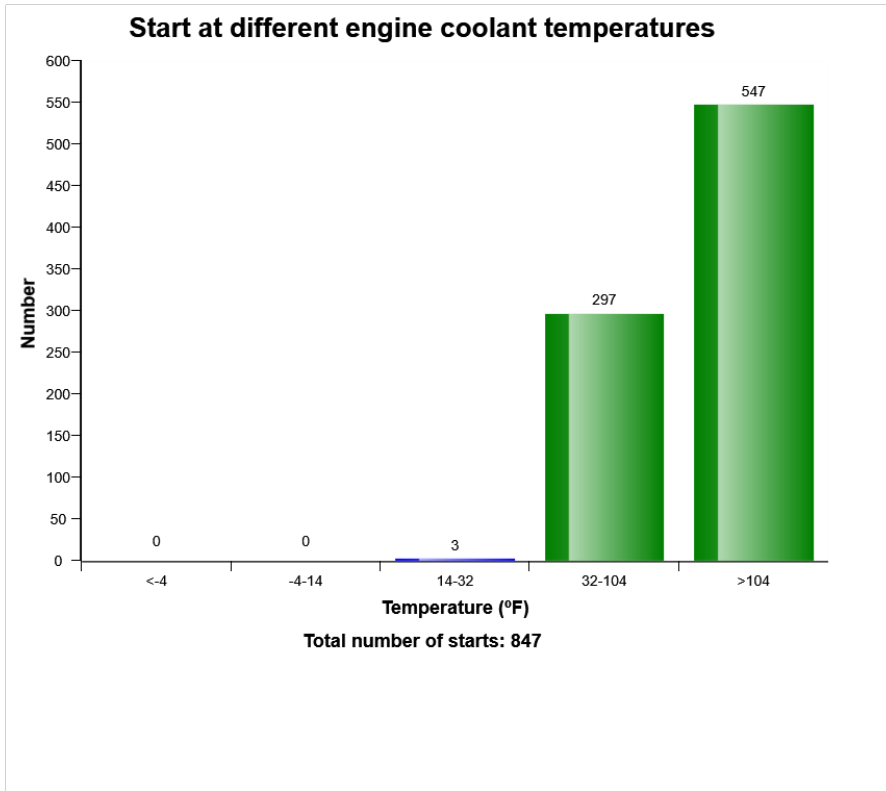
Machine model	SerialNo	Operating Hours	Reading Date
PL4809E	310020	1252.3	08/04/2019

**Water level warning in water separator
Total number of occurrences = 0**

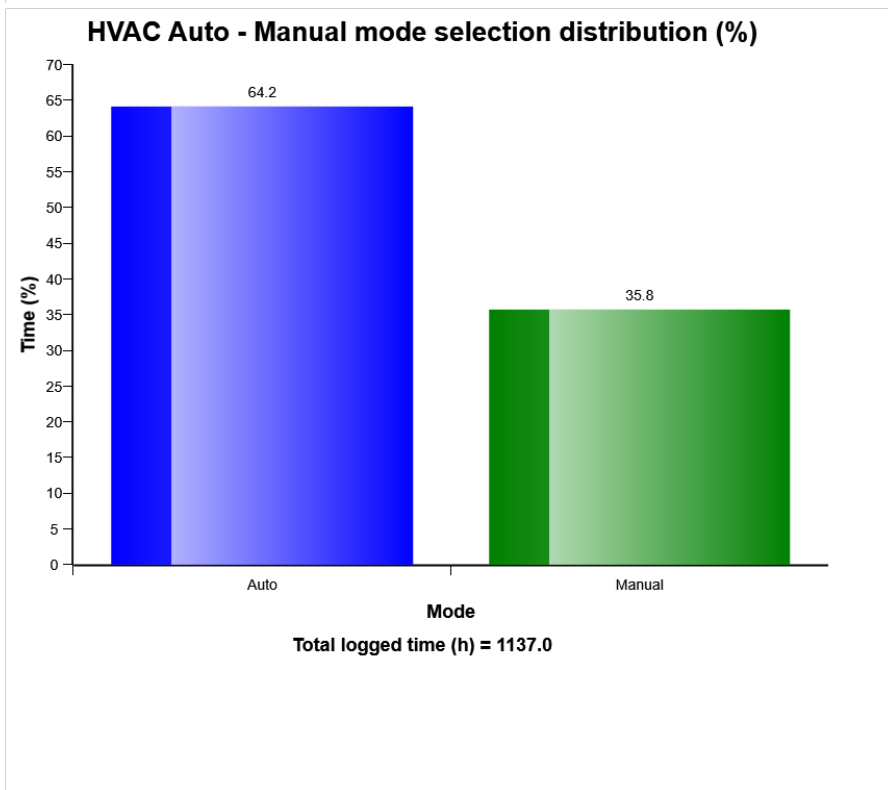
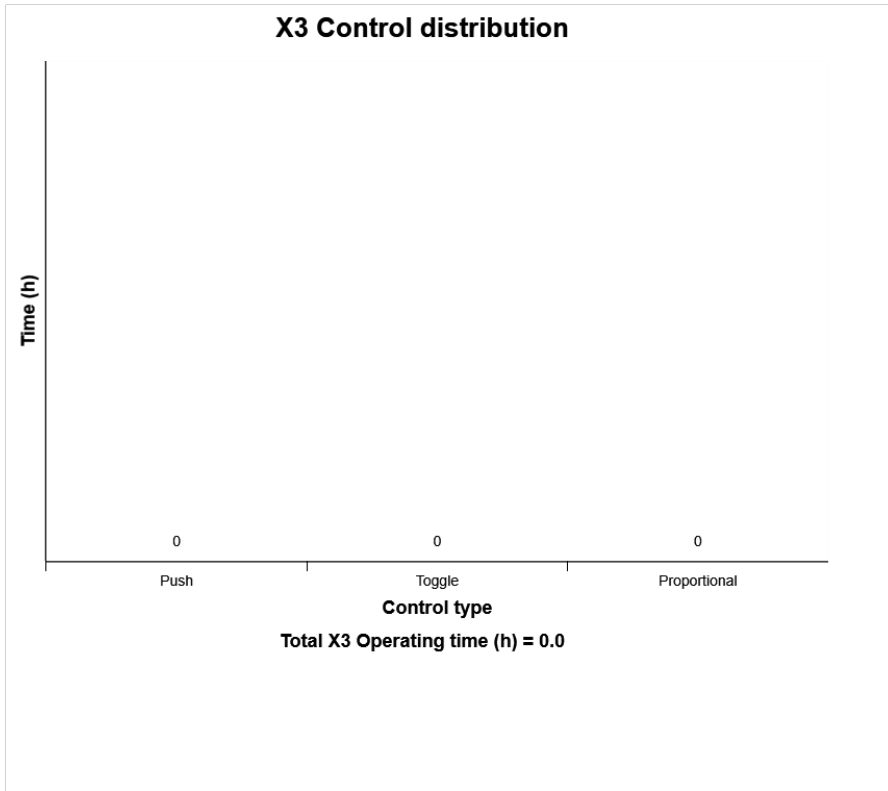
Op hours	Year	Month	Day	Hour	Minute	Duration (min)
* 0	2000	0	0	0	0	0
* 0	2000	0	0	0	0	0
* 0	2000	0	0	0	0	0
* 0	2000	0	0	0	0	0
* 0	2000	0	0	0	0	0
* 0	2000	0	0	0	0	0
* 0	2000	0	0	0	0	0
* 0	2000	0	0	0	0	0
* 0	2000	0	0	0	0	0
* 0	2000	0	0	0	0	0
* 0	2000	0	0	0	0	0
* 0	2000	0	0	0	0	0
* 0	2000	0	0	0	0	0
* 0	2000	0	0	0	0	0
* 0	2000	0	0	0	0	0
* 0	2000	0	0	0	0	0
* 0	2000	0	0	0	0	0
* 0	2000	0	0	0	0	0
* 0	2000	0	0	0	0	0
* 0	2000	0	0	0	0	0
* 0	2000	0	0	0	0	0



Machine model	SerialNo	Operating Hours	Reading Date
PL4809E	310020	1252.3	08/04/2019

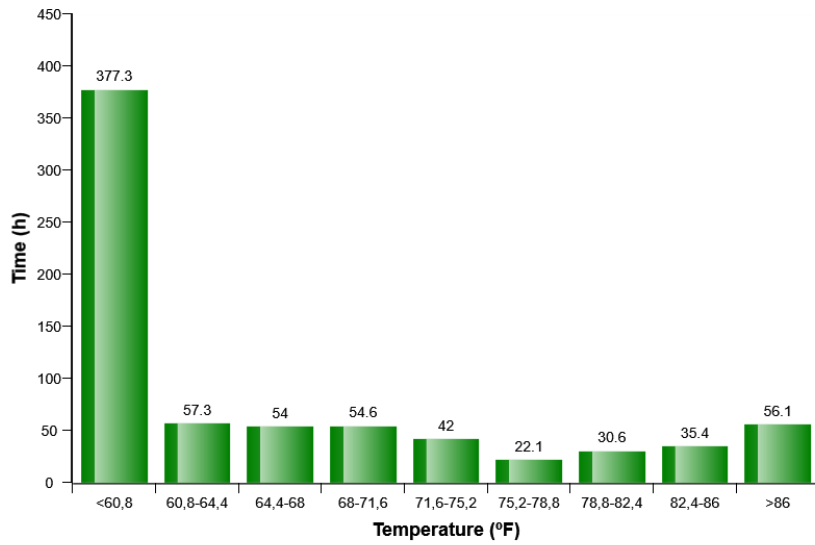


Machine model	SerialNo	Operating Hours	Reading Date
PL4809E	310020	1252.3	08/04/2019

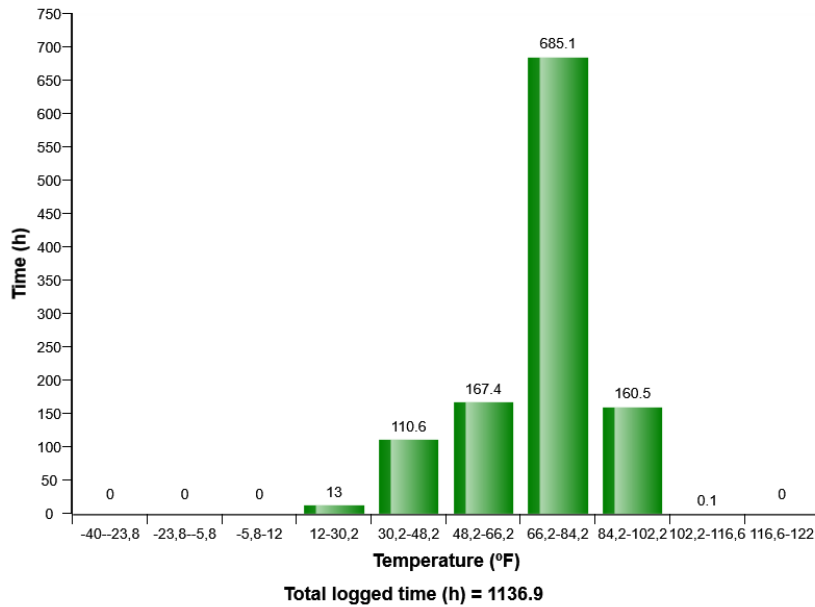


Machine model	SerialNo	Operating Hours	Reading Date
PL4809E	310020	1252.3	08/04/2019

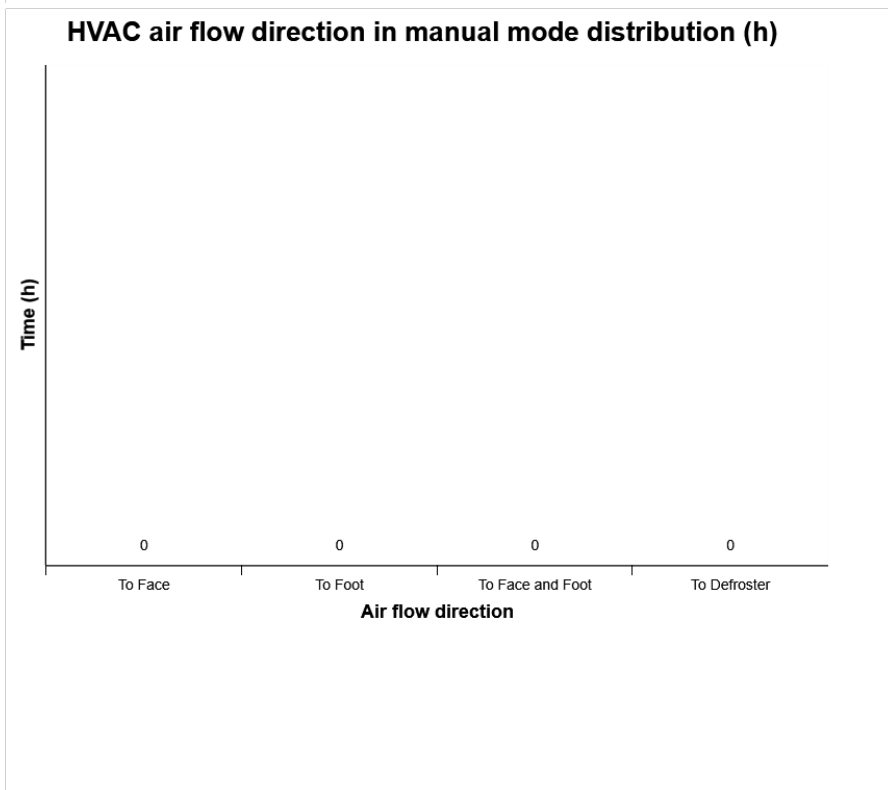
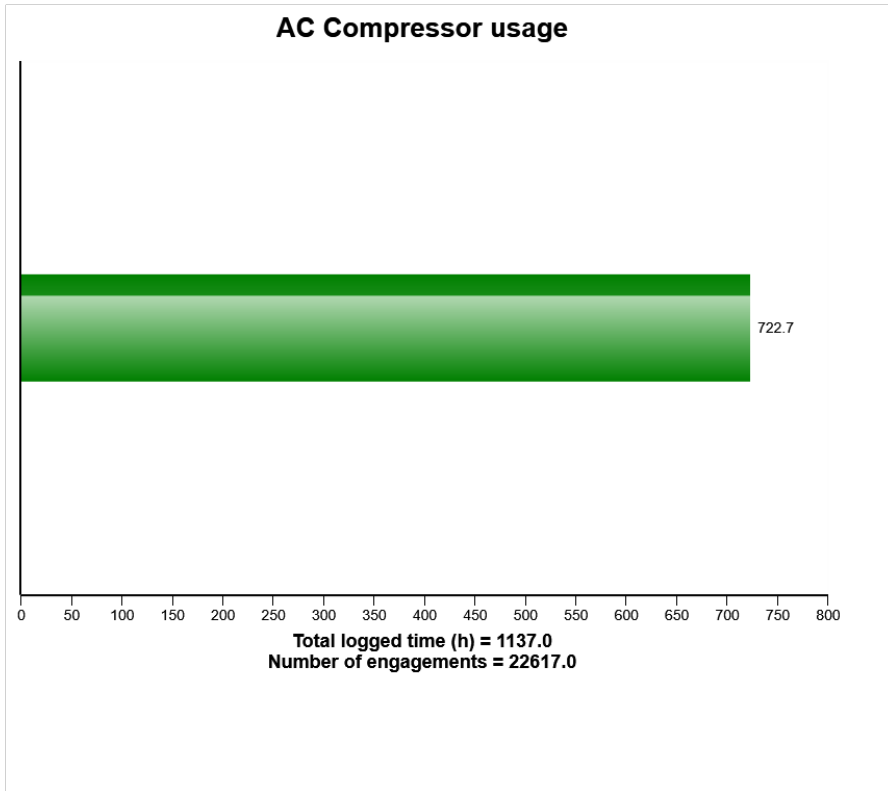
HVAC air temperature setting in auto control mode distribution (h)



Machine ambient temperature distribution (h)

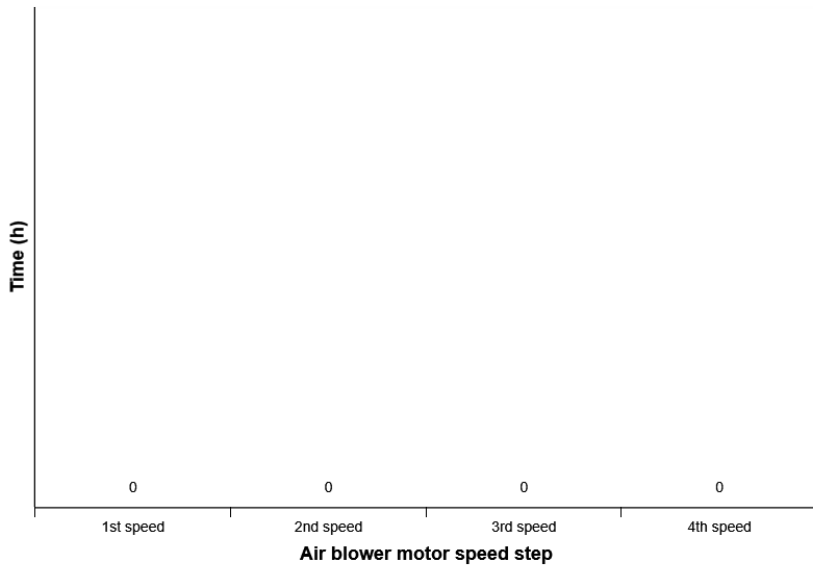


Machine model	SerialNo	Operating Hours	Reading Date
PL4809E	310020	1252.3	08/04/2019

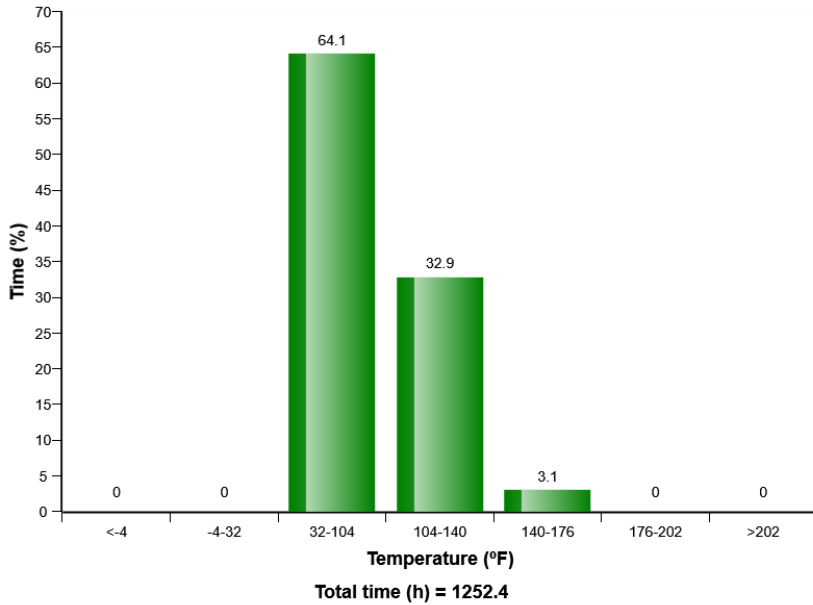


Machine model	SerialNo	Operating Hours	Reading Date
PL4809E	310020	1252.3	08/04/2019

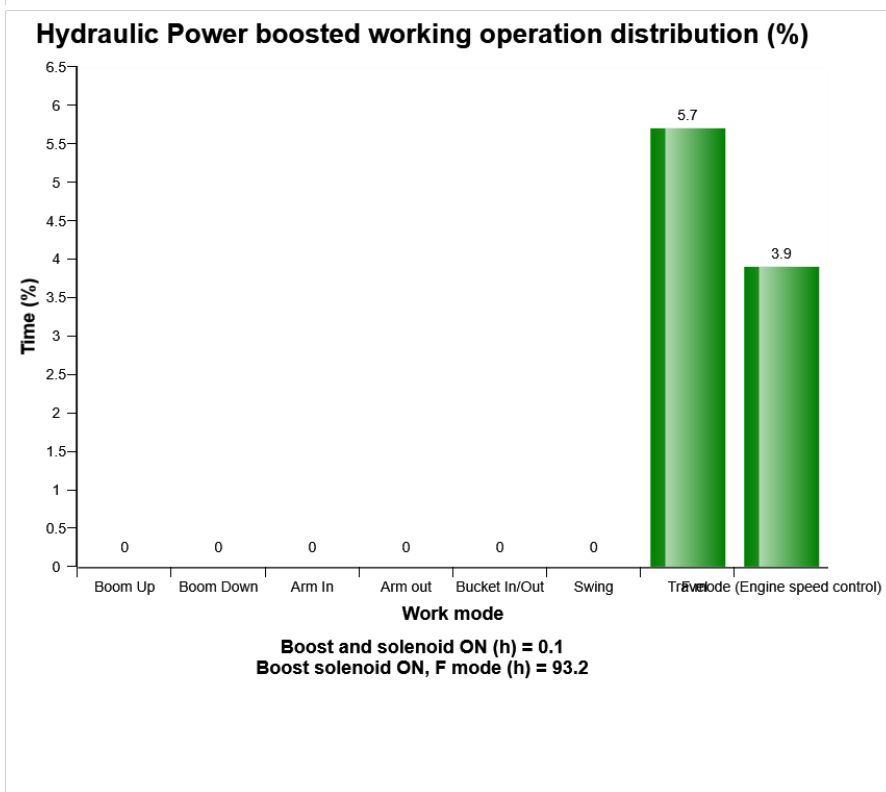
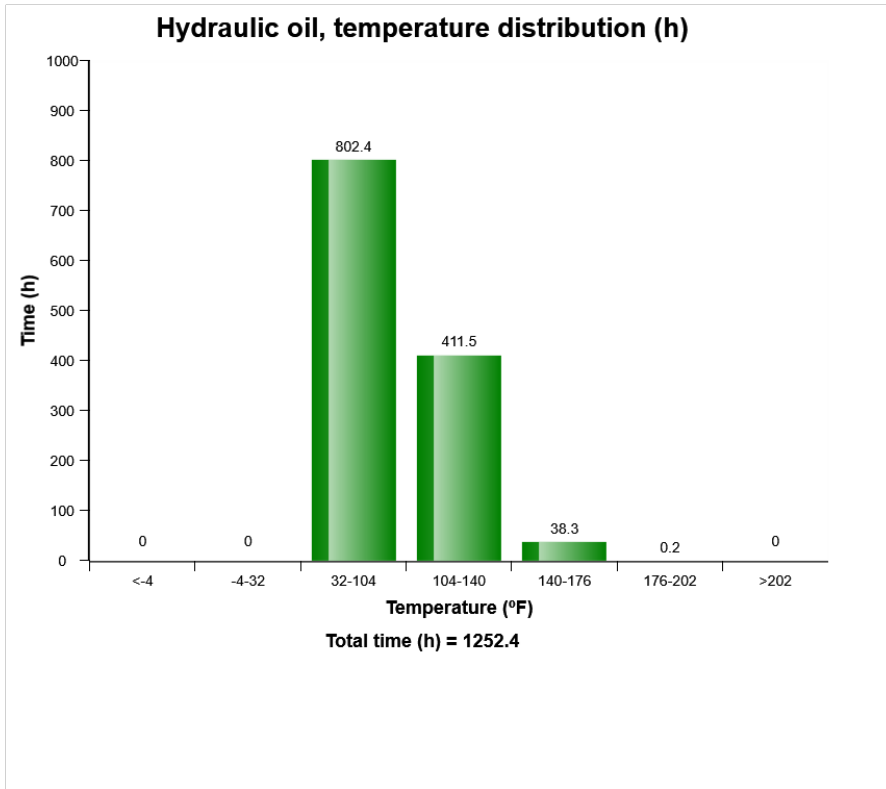
HVAC air blower motor speed in manual mode distribution (h)



Hydraulic oil, temperature distribution (%)

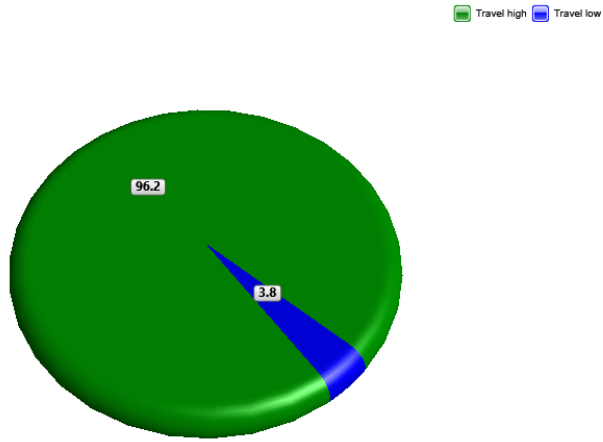


Machine model	SerialNo	Operating Hours	Reading Date
PL4809E	310020	1252.3	08/04/2019



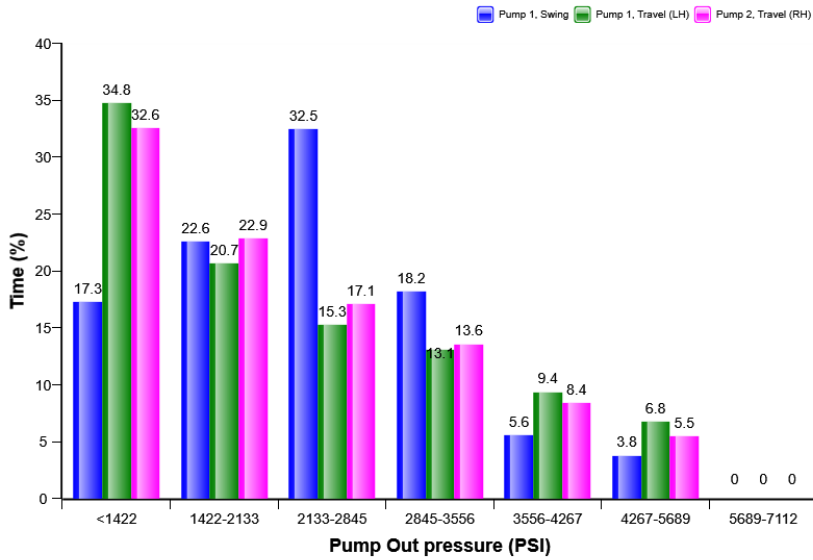
Machine model	SerialNo	Operating Hours	Reading Date
PL4809E	310020	1252.3	08/04/2019

Travel speed, high/low (%)



Total travel time (h) = 107.0
Travel time / Operating hours (%) = 8.5

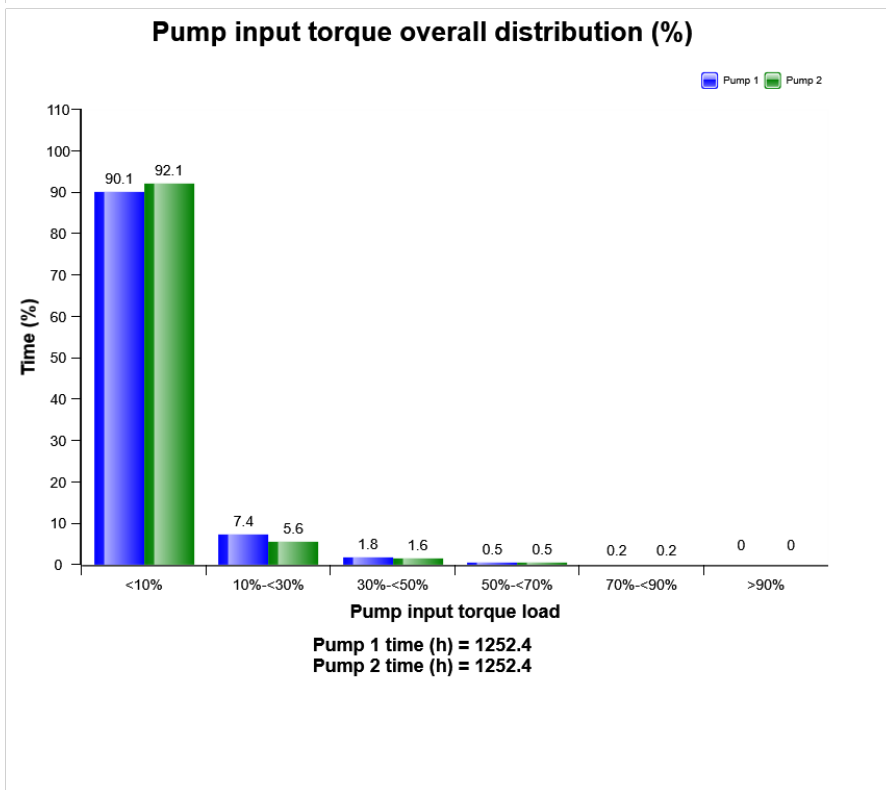
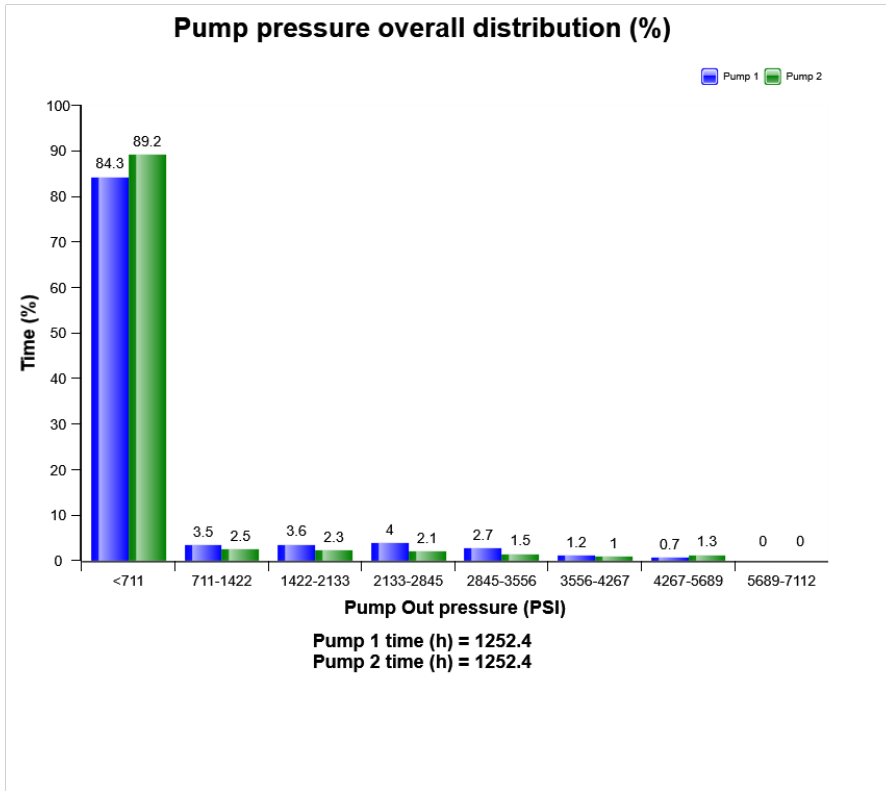
Pump pressure on travel and swing distribution (%)



Swing time (h) = 43.2
Travel (RH) time (h) = 105.3

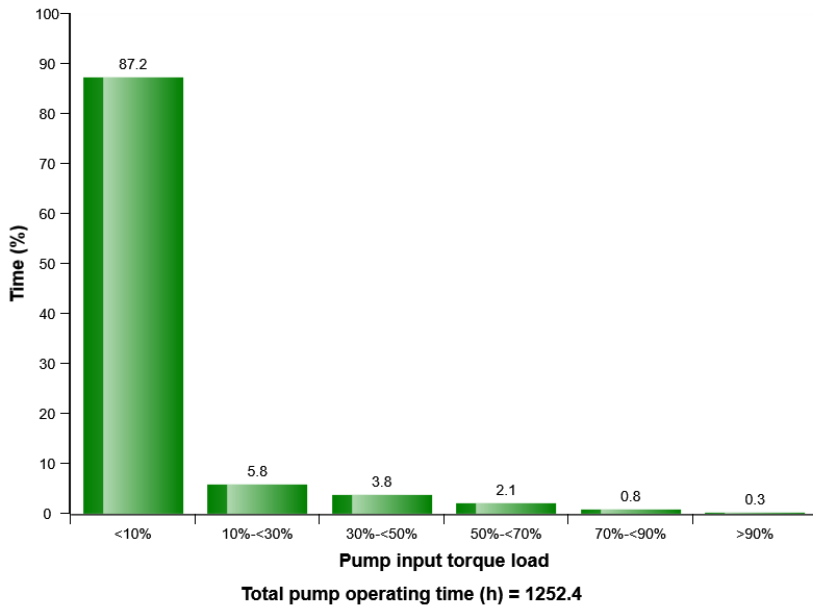


Machine model	SerialNo	Operating Hours	Reading Date
PL4809E	310020	1252.3	08/04/2019

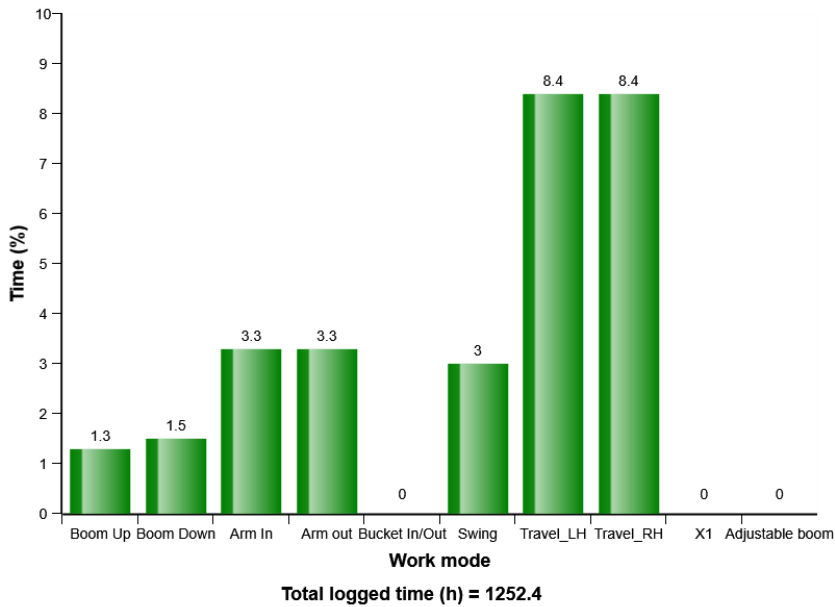


Machine model	SerialNo	Operating Hours	Reading Date
PL4809E	310020	1252.3	08/04/2019

Pump torque load for 2 pump interaction distribution (%)

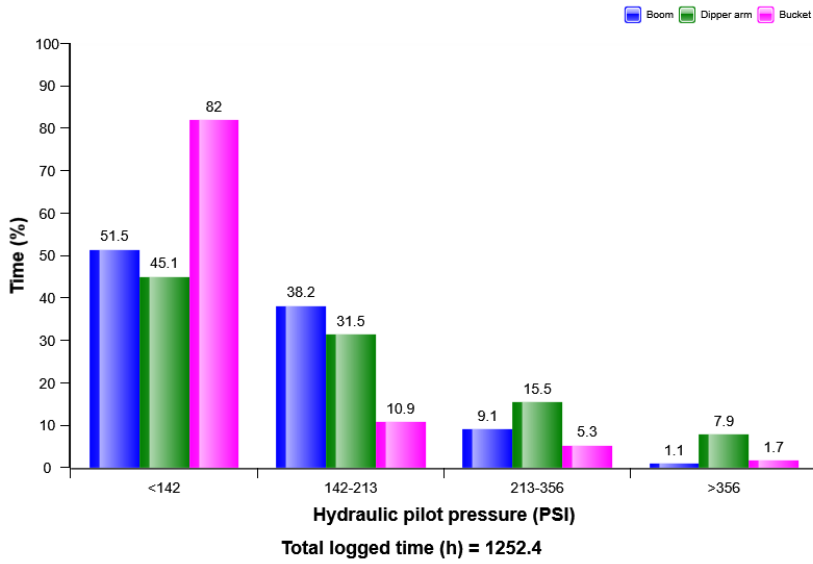


Hydraulic working mode distribution (%)

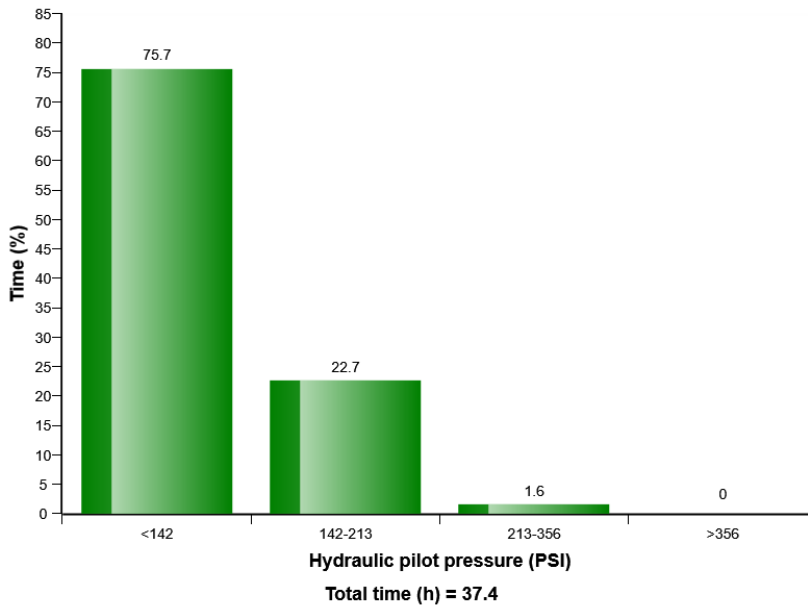


Machine model	SerialNo	Operating Hours	Reading Date
PL4809E	310020	1252.3	08/04/2019

Hydraulic pilot pressure on bucket, boom and arm operation distribution (%)

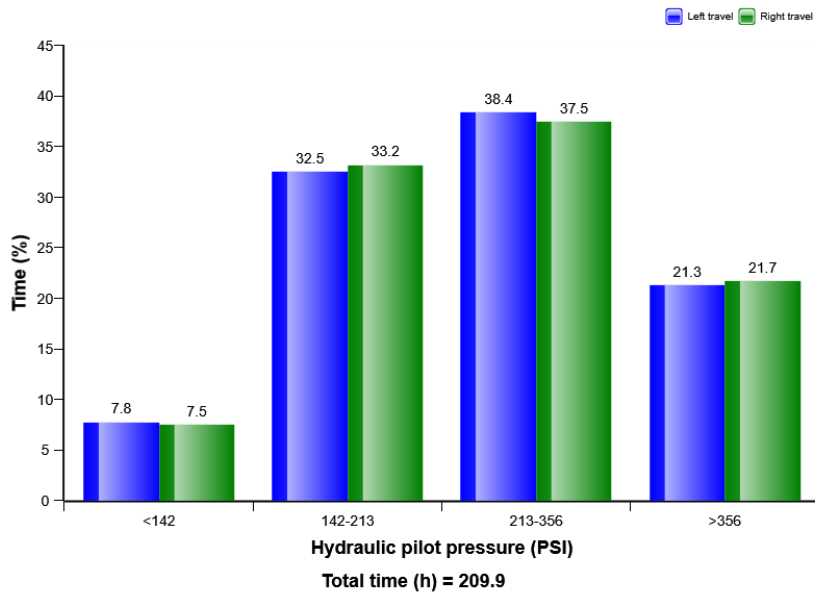


Hydraulic pilot pressure on swing operation distribution (%)

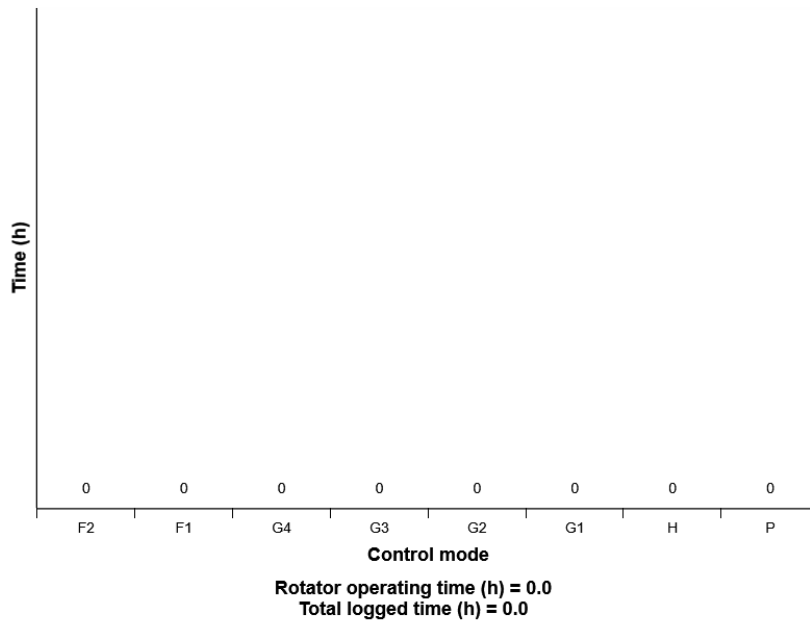


Machine model	SerialNo	Operating Hours	Reading Date
PL4809E	310020	1252.3	08/04/2019

Hydraulic pilot pressure on travel operation distribution (%)



Rotorator operation on engine speed mode distribution (h)



Machine model	SerialNo	Operating Hours	Reading Date
PL4809E	310020	1252.3	08/04/2019

